

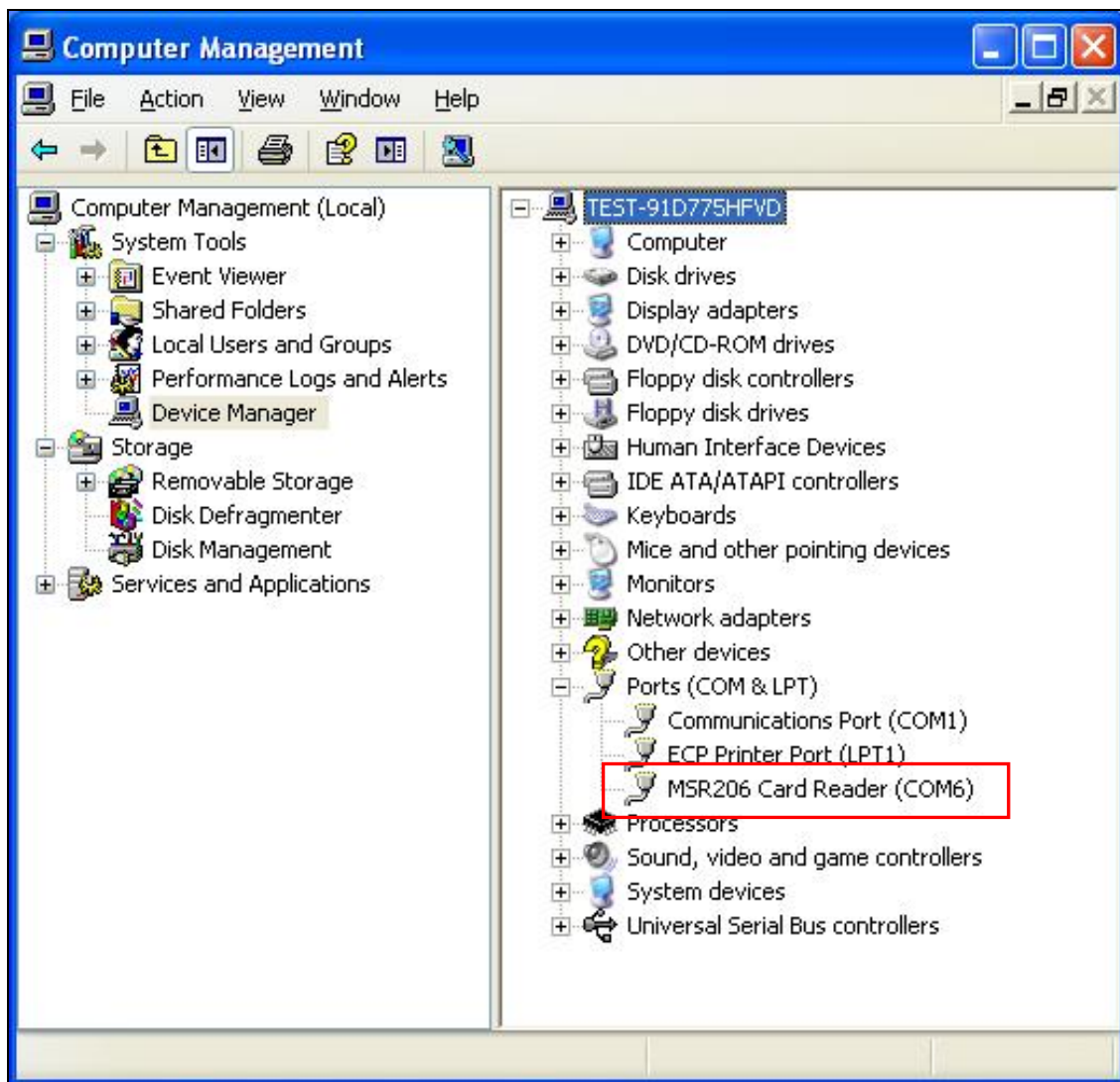
MSR206 USB Driver Installing Guide

USB driver installation

- Unplug MSR206 first
- Run MSR206 Driver Installer EXE program (MSR206 USB Driver_20130109.exe) to install.
- After the installation completed, plug MSR206 into the system
- If a window asking for installation is popped up, follow the procedure to install it.



- Go to “Device Manager” to check COM Port number. The successful installation shown on “Device Manager” will be like the following picture.



Remove USB driver

- Unplug MSR206 reader first
- Run MSR206 Driver Installer EXE program to uninstall the driver and follow the procedure as below.

