

Setting Tool User Guide

This document will help to set printer via Setting Tool.

The Interface of Setting Tool.

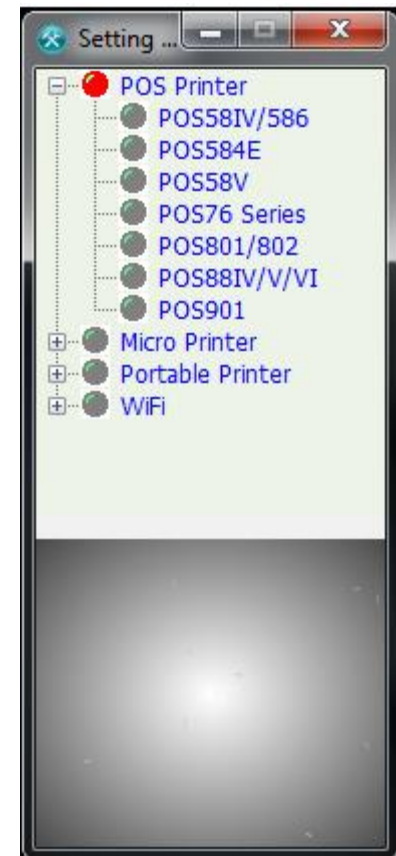
Running the software, it will show the serials of printer and models as the right picture :

- POS Printer
- Micro Printer
- Portable Printer
- WiFi

The printer models are listed under the serials. Clicking the printer model will open the related setting page.

The supported models

- POS Printer
 - POS58IV/586
 - POS584E
 - POS58V
 - POS76 Serial



POS801/802

POS88IV/V/VI

POS901

Micro Printer

DIIID/DIVD/D8

D15

D10

D6

D7

E3

EU58

Portable Printer

TIII/T10

T5

T7

T7i

T9

L31

WIFI *

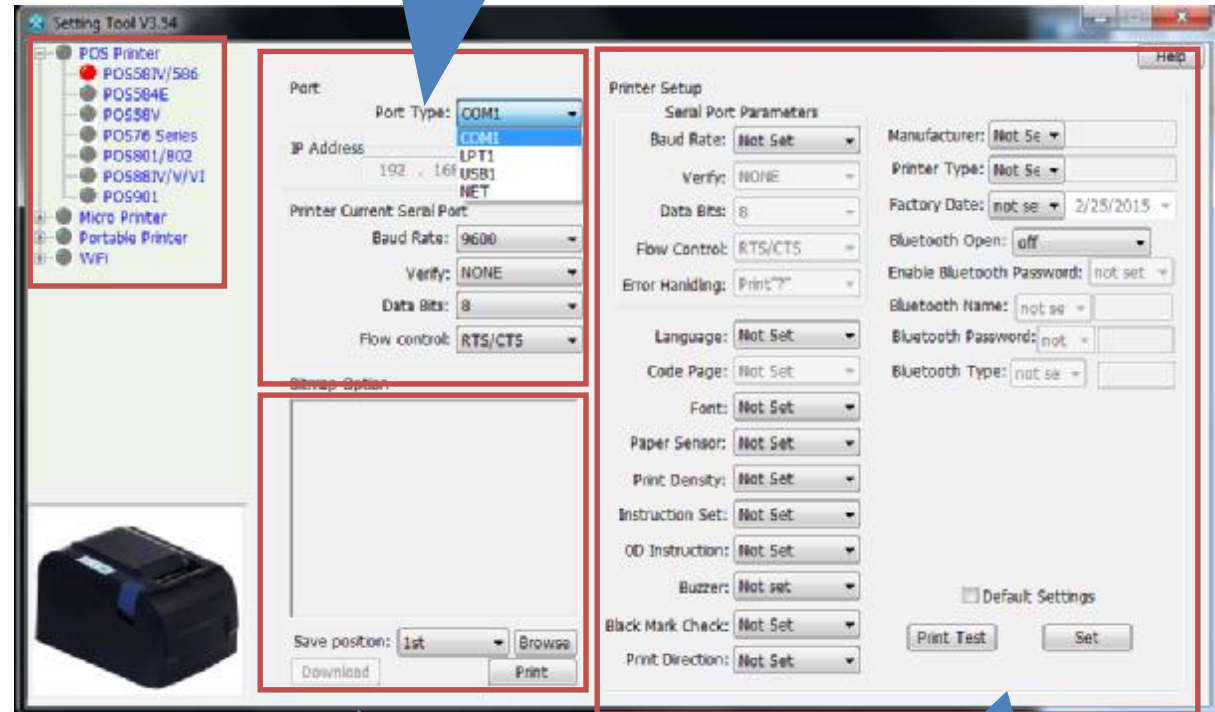
The Function Area of Setting Tool

This Setting Tool has four Areas:

1. Printer Model Selection Area
2. Communication & Connecting Area
3. Bitmap Downloading Area
4. Printer Parameter Setting Area

Communication &
Connecting Area

Printer Model
Selection Area



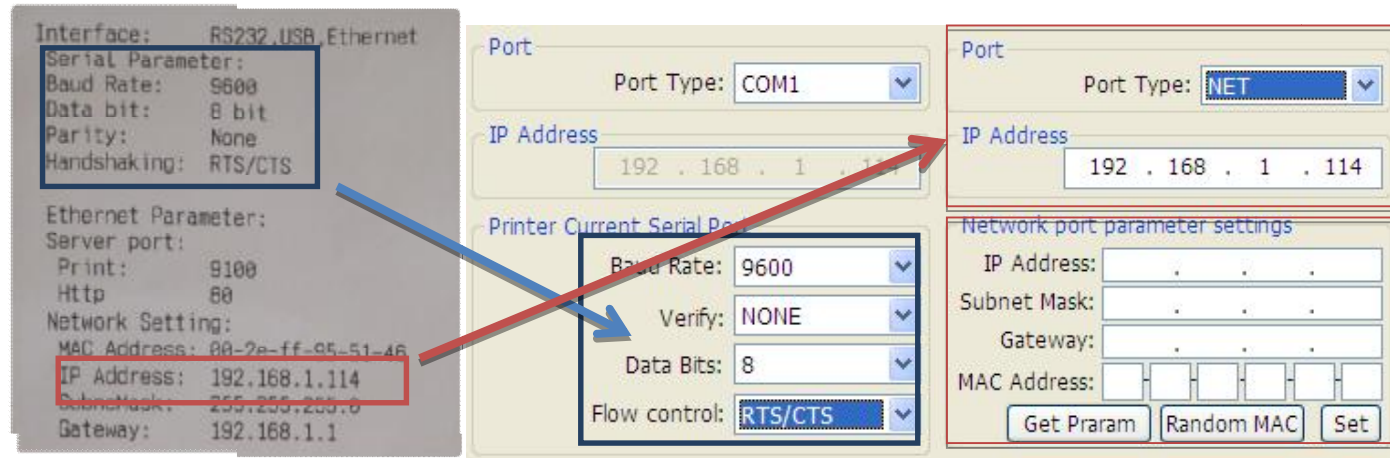
Bitmap Downloading
Area

Printer Parameter
Setting Area

How to make the setting tool work.

1. Select a printer model you want to set.

2. Make sure the printer connect to PC correctly.
 - a. Firstly, select a communication port.
 - b. Secondly, select the communication parameter. (Port “LTP & “USB” needn’t to set the parameter) If you don’t know the parameter, printer self-test paper will show it.



Example:

The left picture is a section of self-test paper. It shows the port information of printer. Select the same parameter in “Setting Tool”.

3. Select the parameter you want and click “Set” button.

How to change the Baud Rate

The screenshot shows a printer configuration window with two main sections: 'Port' and 'Printer Setup'. The 'Port' section includes 'Port Type' (set to COM1), 'IP Address' (192.168.1.114), and 'Printer Current Serial Port' (Baud Rate: 9600, Verify: NONE, Data Bits: 8, Flow control: RTS/CTS). The 'Printer Setup' section includes 'Serial Port Parameters' (Baud Rate: 115200, Verify: NONE, Data Bits: 8, Flow Control: RTS/CTS, Error Handling: Print "?"), 'Language' (Not Set), and 'Font' (Set). There are 'Print Test' and 'Set' buttons, and a 'Default Settings' checkbox.

Refer the selftest to set these parameters.

Select new parameters.

Click "Set" make the setting effect.

How to Change the IP address

Port

Port Type: **NET** ▼

IP Address

192 . 168 . 1 . 114

Network port parameter settings

IP Address: . . .

Subnet Mask: . . .

Gateway: . . .

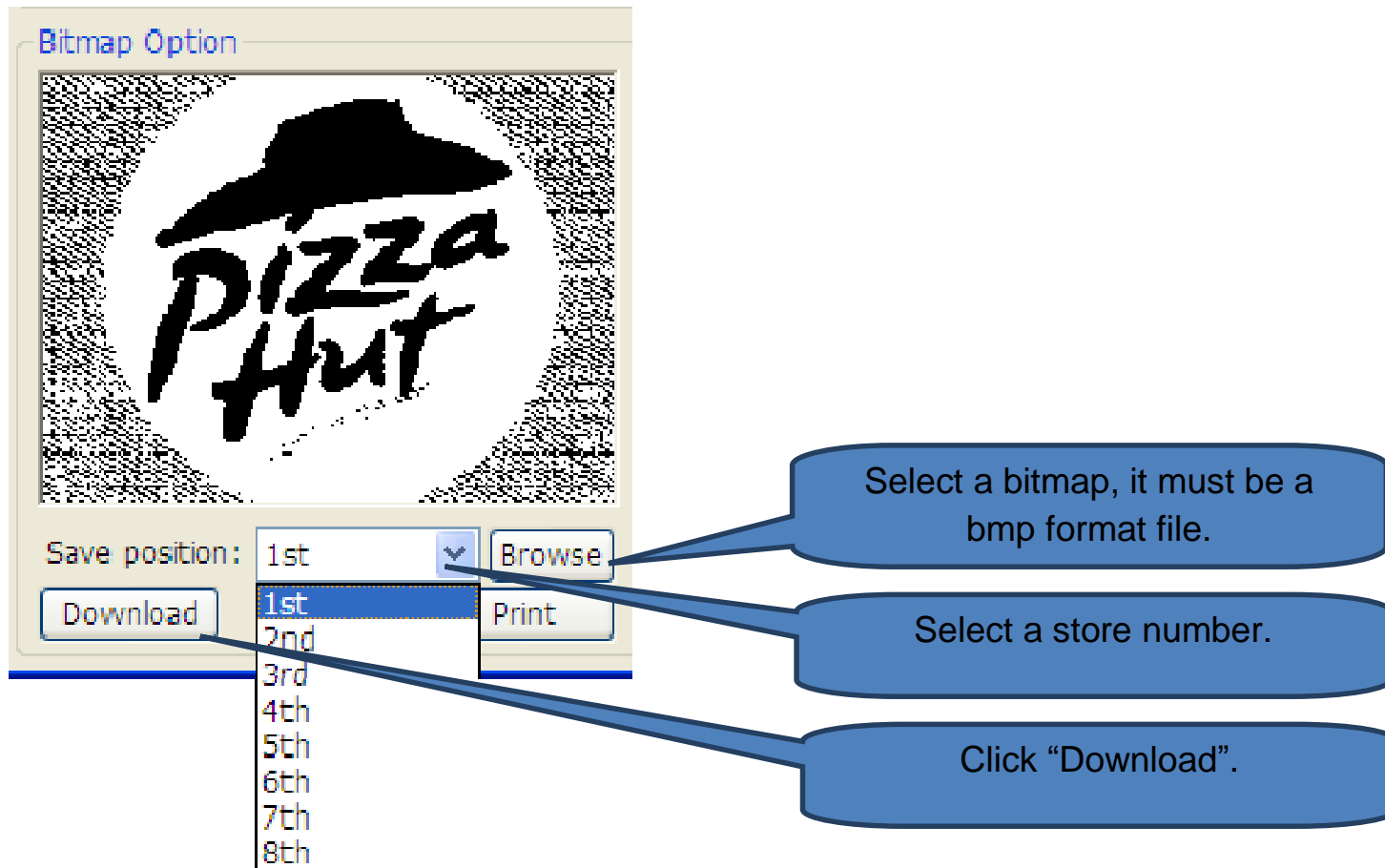
MAC Address: [] [] [] [] [] []

Get Praram Random MAC Set

Input the Current
IP address to
connect printer.

Fill all of parameters
and Click "Set"
make the setting
effect.

How to download bitmaps



How to Setup WiFi

Note: This tool only be able to set the **WIFI** working mode via wire interface, so besides Wifi, the printer must have other wire interfaces.

Parameters:

Port: select a port connect to printer. It supports 4 interfaces: COM / LTP / USB / NET

IP Address Set: input the current IP address.

Current COM port---- (select the current com parameter)

Baud Rate: / Data Bits: / Verify: /Flow control:

Wifi Mode Set: Select the work Mode

AP(SOFT AP) / STA (Client)

TCP/UDP Connection----

Protocol Type: TCP SERVER / TCP CLIENT

Port: (set a listen port, default port is 9100)

IP Address: (set the Server IP address)

STA Mode----

SSID: fill the AP name.

Key: fill the password

Auth: select authentication method

Encry: select Encryption method

SSID: set a name for printer

IP Mode: select a IP mode

DHCP / static

IP Address: set IP address

Net Mask: set net mask

Gateway: set Gateway

AP Mode----

SSID: set a name for printer AP.

Auth: select a authentication method.

OPEN / WPA2PSK

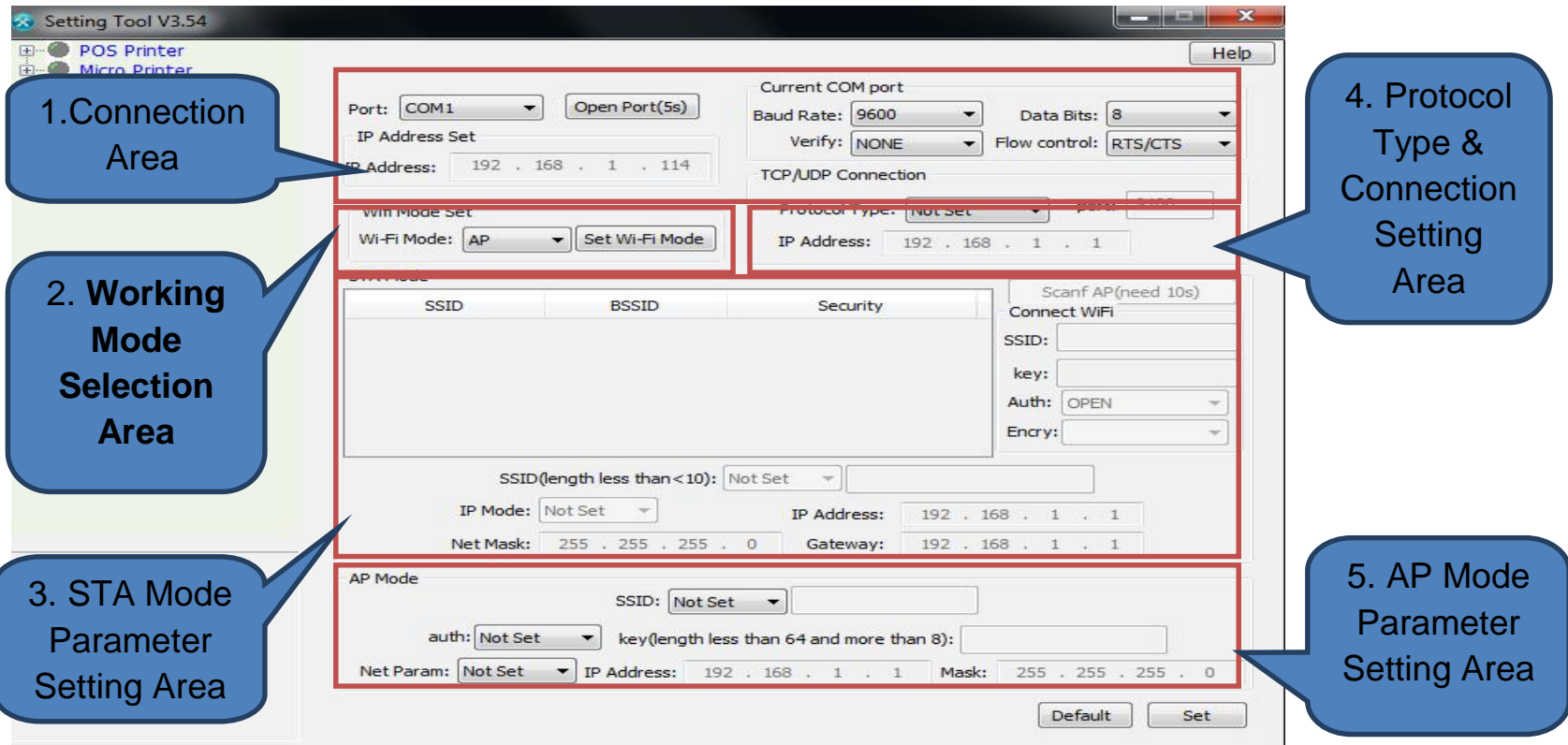
NetParam: select or not set net parameter.

IP Address: fill an IP address.

Mask: fill Mask.

Setting WIFI steps:

1. Select a port and fills (select) right parameters to connect the printer. (Area 1)
2. Select a connection type in Area 4. The default working mode is "TCP SERVER", so please select "Not Set". Don't set it to "TCP Client".
3. Select a working mode. (Area 2)
 - a. If the printer will works in AP Mode, fill the parameters in Area 5.
 - b. If the printer will works in STA Mode, fill and select parameters in Area 3. The printer support DHCP and static mode.
4. Click "Set" let the setting effect.



The General Parameters of POS Printer

Port----

Port Type: Select the connection port, it supports

COM

LTP

USB

NET

IP Address: If connection with NET, fill the IP address of printer.

Printer Current serial Port----

Baud Rate: 1200 to 115200

Verify: NONE/ODD/EVEN

Data Bits: 7/8

Flow Control: NONE or RTS/CTS or XON/XOFF

Bitmap Option-

Save position: select a number of store position.

Serial Port Parameters----

Baud Rate: 1200 to 115200

Verify: NONE/ODD/EVEN

Data Bits: 7/8

Flow Control: NONE or RTS/CTS or XON/XOFF

Error Handling: Printer “?” / Ignore

Language: English / Simplified Chinese / Traditional Chinese

Font: select the character size

Paper Sensor: Low / Medium / High

Print Density: Low / Medium / High

Instruction Set: ESC/POS or SPMP or Others

Code Page: If Language set to English, Code Page supports 47
Languages.

0D Instruction: 0D Invalid / 0D Valid

Black Mark Check: OFF / ON

Print Direction: Forward / Reverse

Manufacturer: Change the Manufacturer

Printer Type: Change the Printer Type

Factory Date: Change the Factory Date

Bluetooth Open: Open the Bluetooth Setting

Enable Bluetooth Password: Turn on or off Bluetooth Password

Bluetooth Name: Change the Bluetooth Name

Bluetooth Password: Change the Bluetooth Password

Bluetooth Type: Change the Type of Bluetooth

USB Interface Type:

Printer (printer will be recognized as a USB printer.)

Virtual Serial Port (printer will be recognized as a Serial printer.)

Buzzer: Prohibited / Error allowed / Cutter allows / Cutter & Error allowed

Black Mark Check: OFF / ON

Paper Will Do: OFF / ON

POS58IV/586 Parameters

Setting Tool V3.54

POS Printer

- POS58IV/586
- POS584E
- POS58V
- POS76 Series
- POS801/802
- POS88IV/V/VI
- POS901
- Micro Printer
- Portable Printer
- WiFi

Port

Port Type: COM1

IP Address

192 . 168 . 1 . 114

Printer Current Serial Port

Baud Rate: 9600

Verify: NONE

Data Bits: 8

Flow control: RTS/CTS

Bitmap Option

Save position: 1st

Download

Print

Printer Setup

Serial Port Parameters

Baud Rate: Not Set

Verify: NONE

Data Bits: 8

Flow Control: RTS/CTS

Error Handling: Print"?"

Language: Not Set

Code Page: Not Set

Font: Not Set

Paper Sensor: Not Set

Print Density: Not Set

Instruction Set: Not Set

OD Instruction: Not Set

Buzzer: Not set

Black Mark Check: Not Set

Print Direction: Not Set

Manufacturer: Not Se

Printer Type: Not Se

Factory Date: not se 2/25/2015

Bluetooth Open: off

Enable Bluetooth Password: not set

Bluetooth Name: not se


Bluetooth Password: not

Bluetooth Type: not se

☐ Default Settings

Print Test

Set



No Special Parameter.

POS584E Parameters

Setting Tool V3.54

Help

POS Printer

- POS58IV/586
- POS584E
- POS58V
- POS76 Series
- POS801/802
- POS88IV/V/VI
- POS901
- Micro Printer
- Portable Printer
- WiFi

Port

Port Type: USB1

IP Address

192 . 168 . 1 . 114

Network port parameter settings

IP Address: . . .

Subnet Mask: . . .

Gateway: . . .

MAC Address: [] [] [] [] [] []

Get Param Random MAC Set

Bitmap Option

Save position: 1st

Download Print

Printer Setup

Language: Not Set

Code Page: Not Set

Font: Not Set

Paper Sensor: Not Set

Print Density: Not Set

Instruction Set: Not Set

OD Instruction: Not Set

Buzzer: Not set

Black Mark Check: Not Set

Print Direction: Not Set

USB Interface Type: Not Set


Manufacturer: Not Se

Printer Type: Not Se

Printer Type: Not Se

Default Settings

Print Test Set



Special parameters :

USB Interface Type:

Printer (printer will be recognized as a USB printer.)

Virtual Serial Port (printer will be recognized as a Serial printer.)

POS58V Parameters

Setting Tool V3.54

Help

- POS Printer
 - POS58IV/586
 - POS584E
 - POS58V**
 - POS76 Series
 - POS801/802
 - POS88IV/V/VI
 - POS901
- Micro Printer
- Portable Printer
- WiFi

Port
Port Type: COM1

Printer Current Serial Port
Baud Rate: 9600
Verify: NONE
Data Bits: 8
Flow control: RTS/CTS

Bitmap Option

Save position: 1st Browse
Download Print

Printer Setup


Serial Port Parameters

Baud Rate: Not Set
Verify: NONE
Data Bits: 8
Flow Control: RTS/CTS
Error Handling: Print"?"
Language: Not Set
Code Page: Not Set
Font: Not Set
Paper Sensor: Not Set
Print Density: Not Set
Instruction Set: Not Set
Print Direction: Not Set
Manufacturer: Not Se
Printer Type: Not Se
Factory Date: not se 2/25/2015

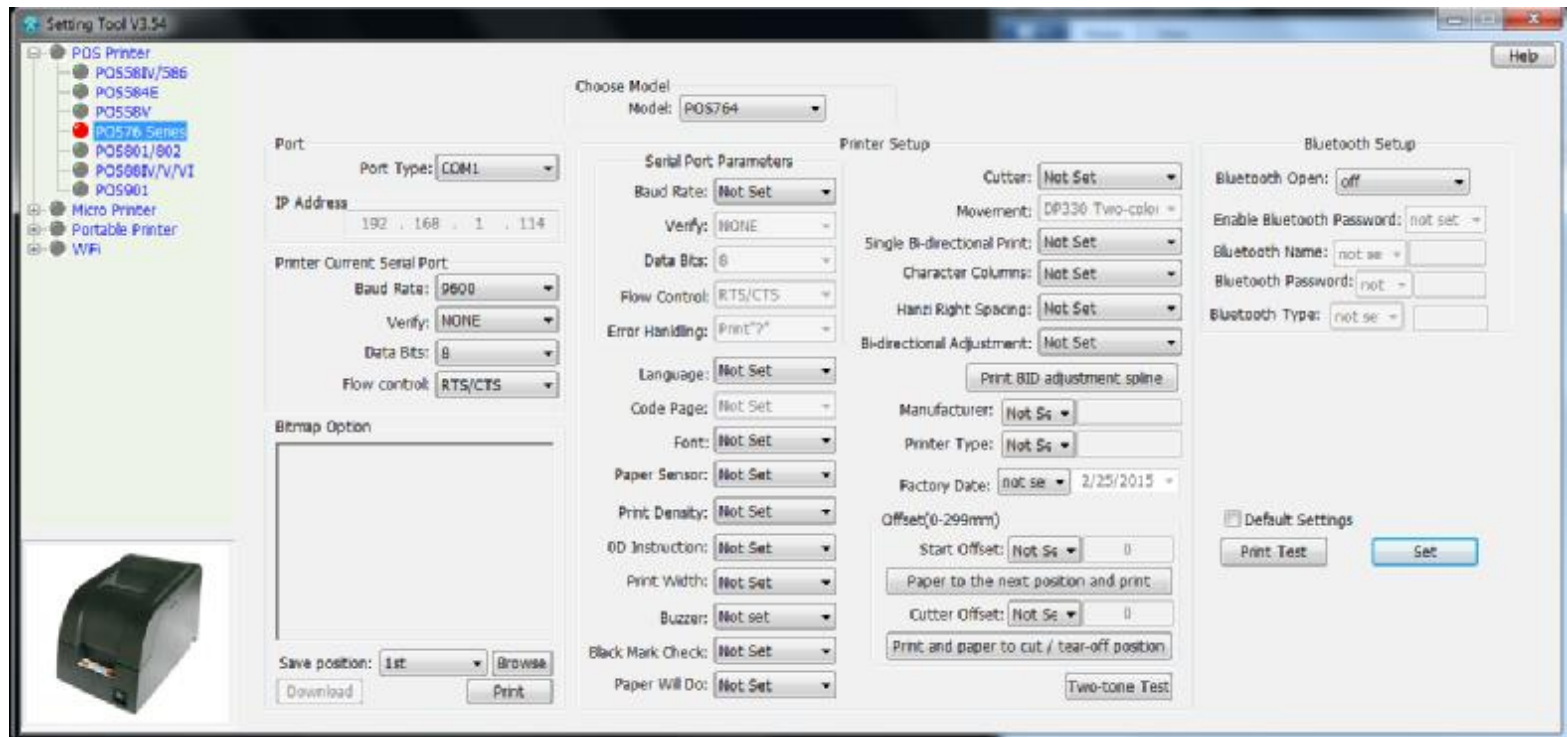
Bluetooth Setup

Bluetooth Open: off
Enable Bluetooth Password: not set
Bluetooth Name: not se
Bluetooth Password: not
Bluetooth Type: not se

☐ Default Settings
Print Test Set



Note: All of parameters refer to general parameters.
POS76 Series Parameters



Special parameters:

Choose Model: POS76II / POS76III / POS764
(Before setting, the exact printer model must be chose to set)

Print Width: 76.2mm / 57.5mm

Cutter: No Cutter / ACE088240 / ACS-230 / ACS-532

Movement: DP330 Two-color / DP330 / M-U110II / DP332

Single Bi-directional Print: Bi-directional / Single

Character Columns:

42CPL/35CPL(2 space)

40CPL/33CPL(3 space)

42CPL/35CPL(3 space)

Hanzi Right Spacing: 2 space / 3 space / 0 space

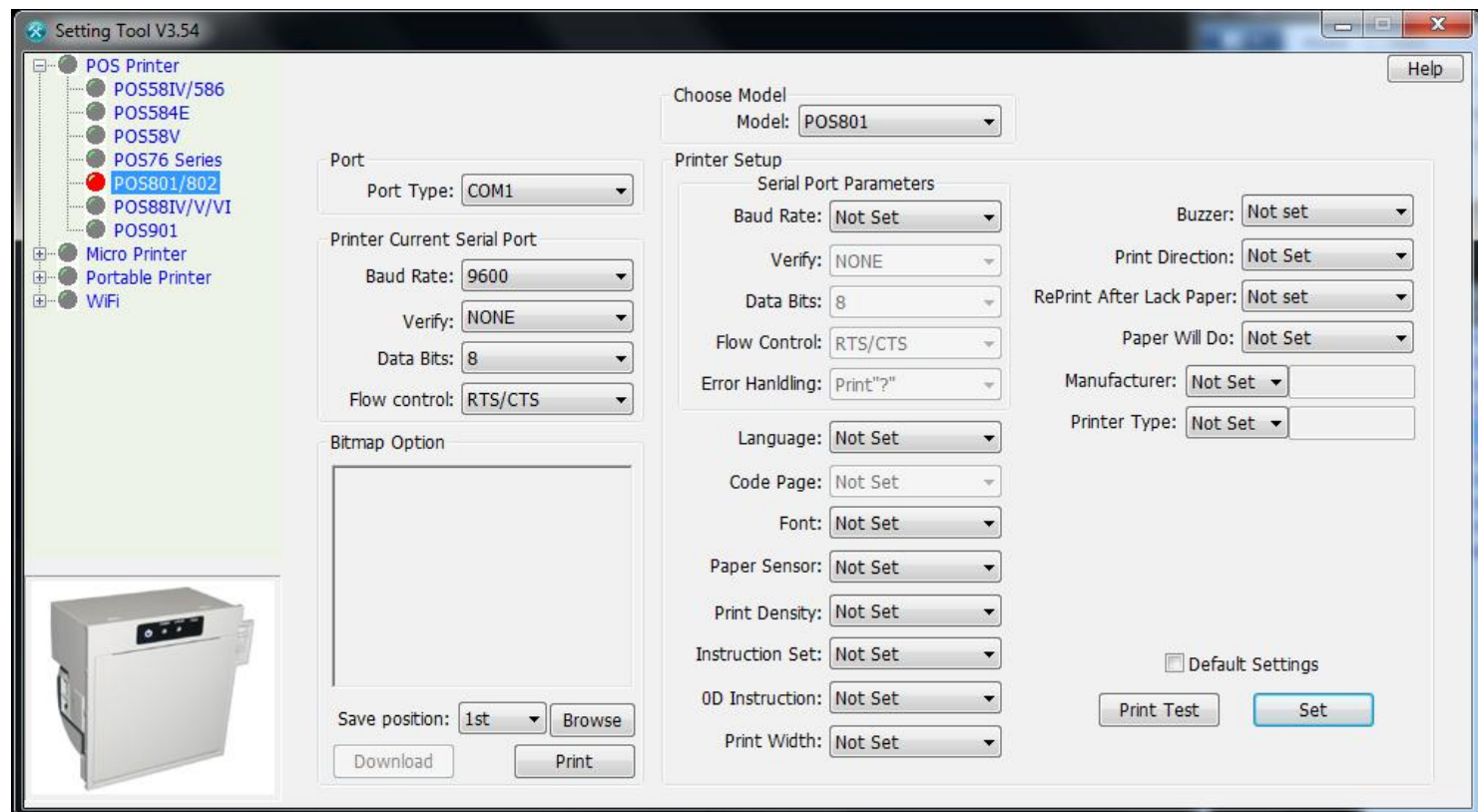
Bi-directional Adjustment: 0 to 24

Offset----

Start Offset: Set a number in order to fit the black mark paper where to start printing.

Cutter Offset: Set a number in order to fit the black mark paper where to finish the printing and cut.

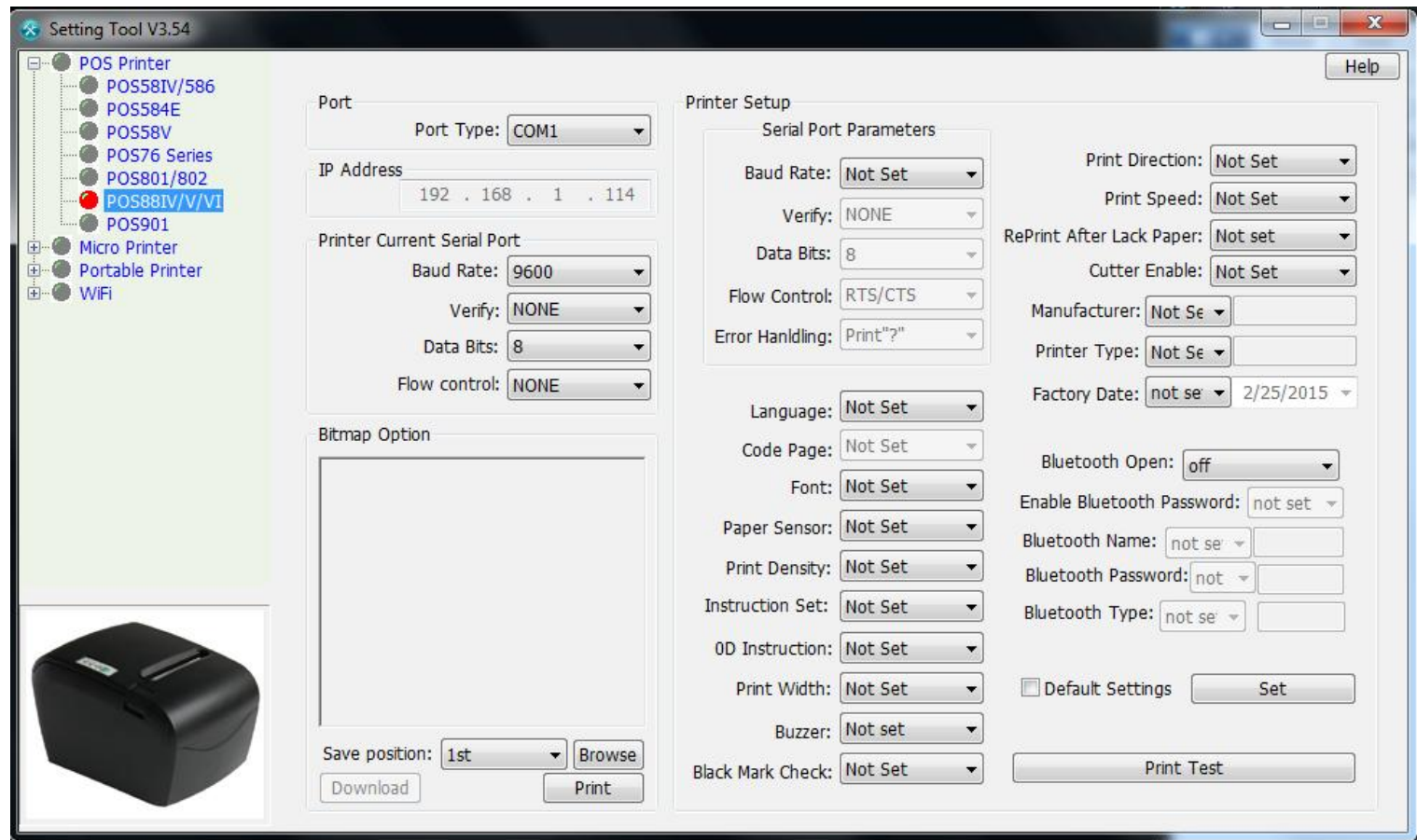
POS801/802 Parameters



Special parameters:

Print Width: 72mm/576Dot or 64mm/512Dot

RePrint After Lack Paper: Prohibited / Allow POS88IV/V/VI Parameters



Special parameters:

Printer Speed:

150mm/S

200mm/S

220mm/S

250mm/S

Cutter Enable: OFF / ON

POS901 Parameters

Setting Tool V3.54

POS Printer
POS58IV/586
POS584E
POS58V
POS76 Series
POS801/802
POS88IV/V/V1
POS901
Micro Printer
Portable Printer
WIFI

Port
Port Type: COM1
IP Address: 192 . 168 . 1 . 114
Printer Current Serial Port
Baud Rate: 9600
Verify: NONE
Data Bits: 8
Flow control: RTS/CTS
Bitmap Option
Save position: 1st
Download
Browse
Print

Printer Setup
Serial Port Parameters
Baud Rate: Not Set
Verify: NONE
Data Bits: 8
Flow Control: RTS/CTS
Error Handling: Print "?"
Language: Not Set
Code Page: Not Set
Font: Not Set
Paper Sensor: Not Set
Print Density: Not Set
Instruction Set: Not Set
OD Instruction: Not Set
Print Width: Not Set
Buzzer: Not set
Black Mark Check: Not Set

Print Direction: Not Set
Print Speed: Not Set
Cutter Enable: Not Set
USB Interface Type: Not Set
USBID Enable: Not Set
Manufacturer: Not Se
Printer Type: Not Se

☐ Default Settings
Print Test Set
Print Self-Test Strip
Print Code Page

Special parameters:

USBID Enable:

Using the printer serial number

Automatically generated using MCUID

The General Parameters of Micro Printer

Serial Port Parameters-----

Baud Rate: 1200 to 115200

Verify: NONE/ODD/EVEN

Data Bits: 7/8

Flow Control: NONE or RTS/CTS or XON/XOFF

Error Handling: Printer “?” / Ignore

Language: English / Simplified Chinese / Traditional Chinese / GB
Traditional

Font: select the character size

Paper Sensor: Low / Medium / High

Print Density: Low / Medium / High

Instruction Set: ESC/POS or SPMP or Others

Code Page: If Language set to English, Code Page supports 47
Languages.

Consumption Level: Level 1 to Level 5

Stylus Compatible: Set the compatibility with Dot-matrix Printer

Thermal Printer

96 Point, 16 Character, 8 Chinese Character

144 Point, 24 Character, 12 Chinese Character

240 Point, 40 Character, 20 Chinese Character

96 Point, 16 Character, 6 Chinese Character

144 Point, 24 Character, 9 Chinese Character

240 Point, 40 Character, 15 Chinese Character

Test Paper: Close / Open

Paper Will Do: Close / Open

Auto Feed After Print: Close / Open

Wait Time: When Parameter “Auto Feed After Print” was be opened, this parameter controls waiting time.

Feed Distance: When Parameter “Auto Feed After Print” was be opened, this parameter controls the feed distance.

Fix Horizontal Magnification: 1 to 8

Fix Vertical Magnification: 1 to 8

Fix Line Spacing: Close / Open

Fix Print Direction: Close / Forward / Reverse

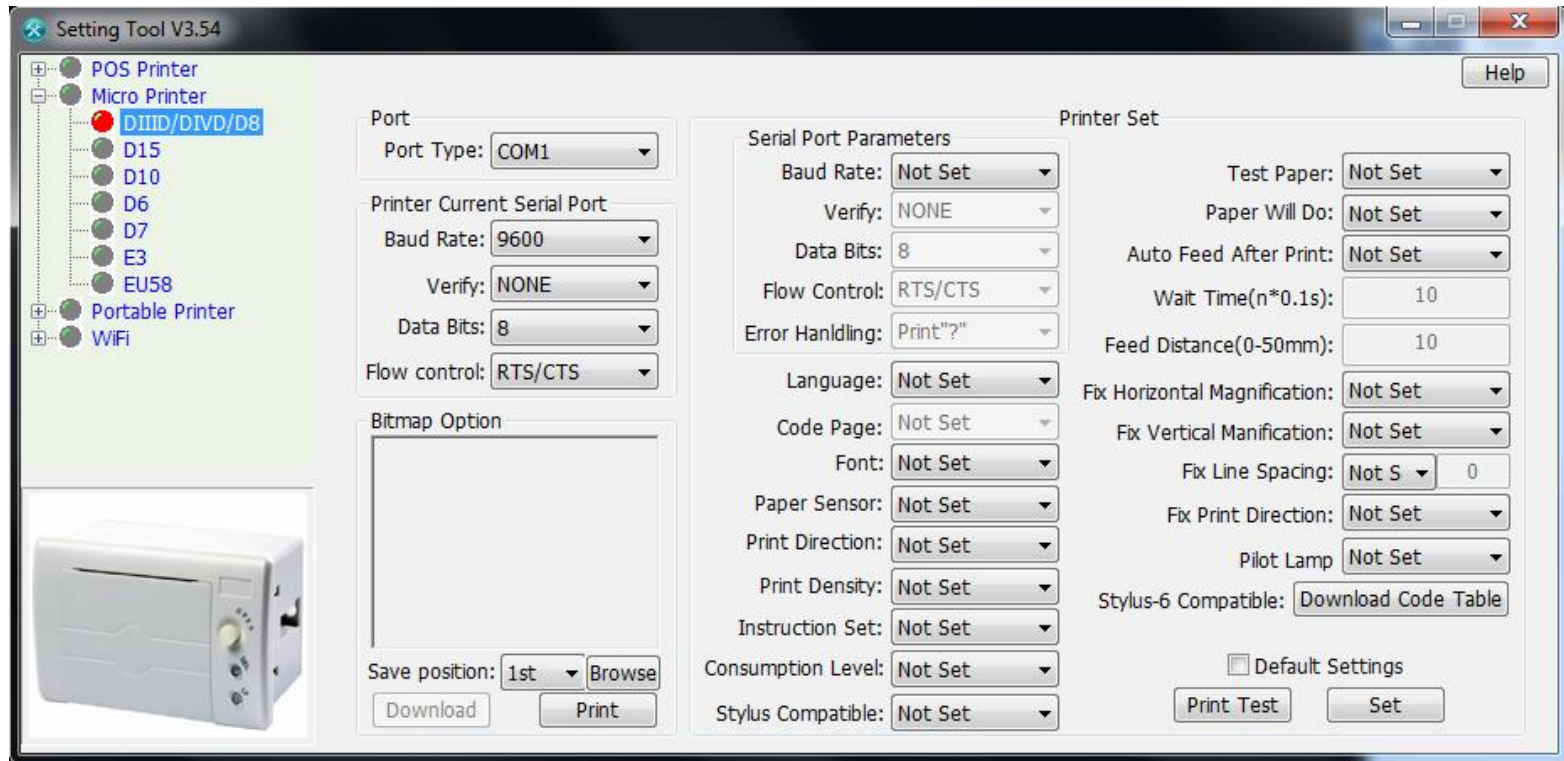
Pilot Lamp: DIII Compatible / DIIIB Compatible

Stylus-6 Compatible: Download a Code Table

Black Mark Check: OFF / ON

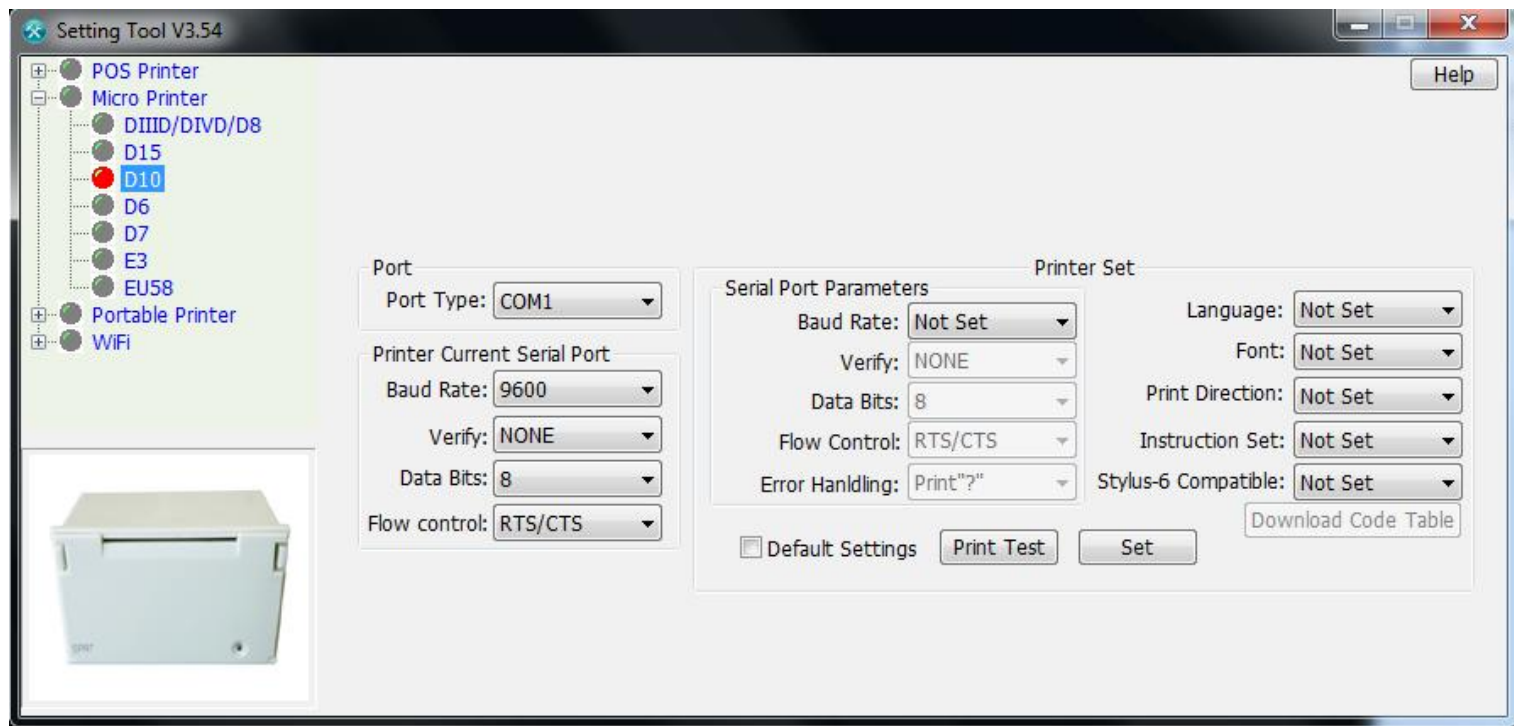
Print Direction: Forward / Reverse

DIIID/DIVD/D8 Parameters



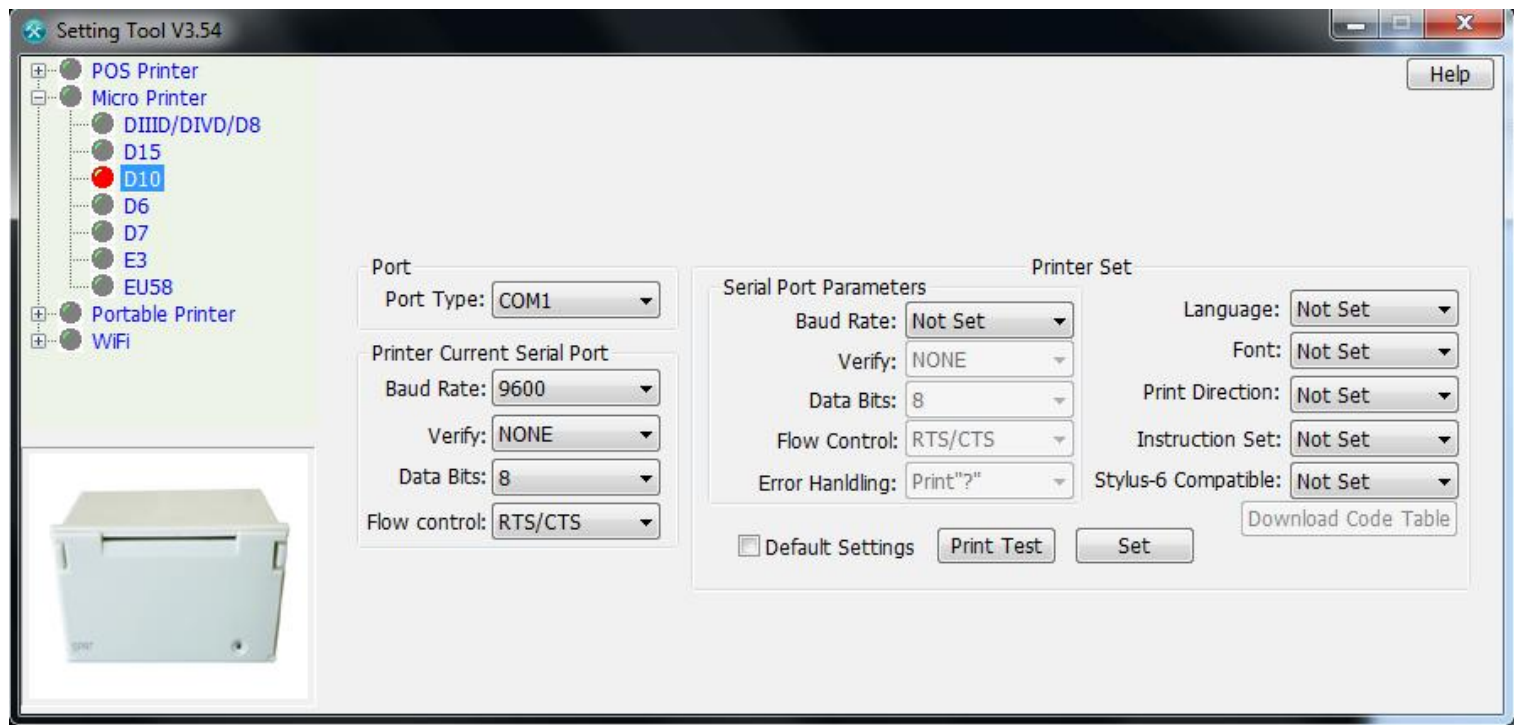
Refer the General parameters.

D10 Parameters



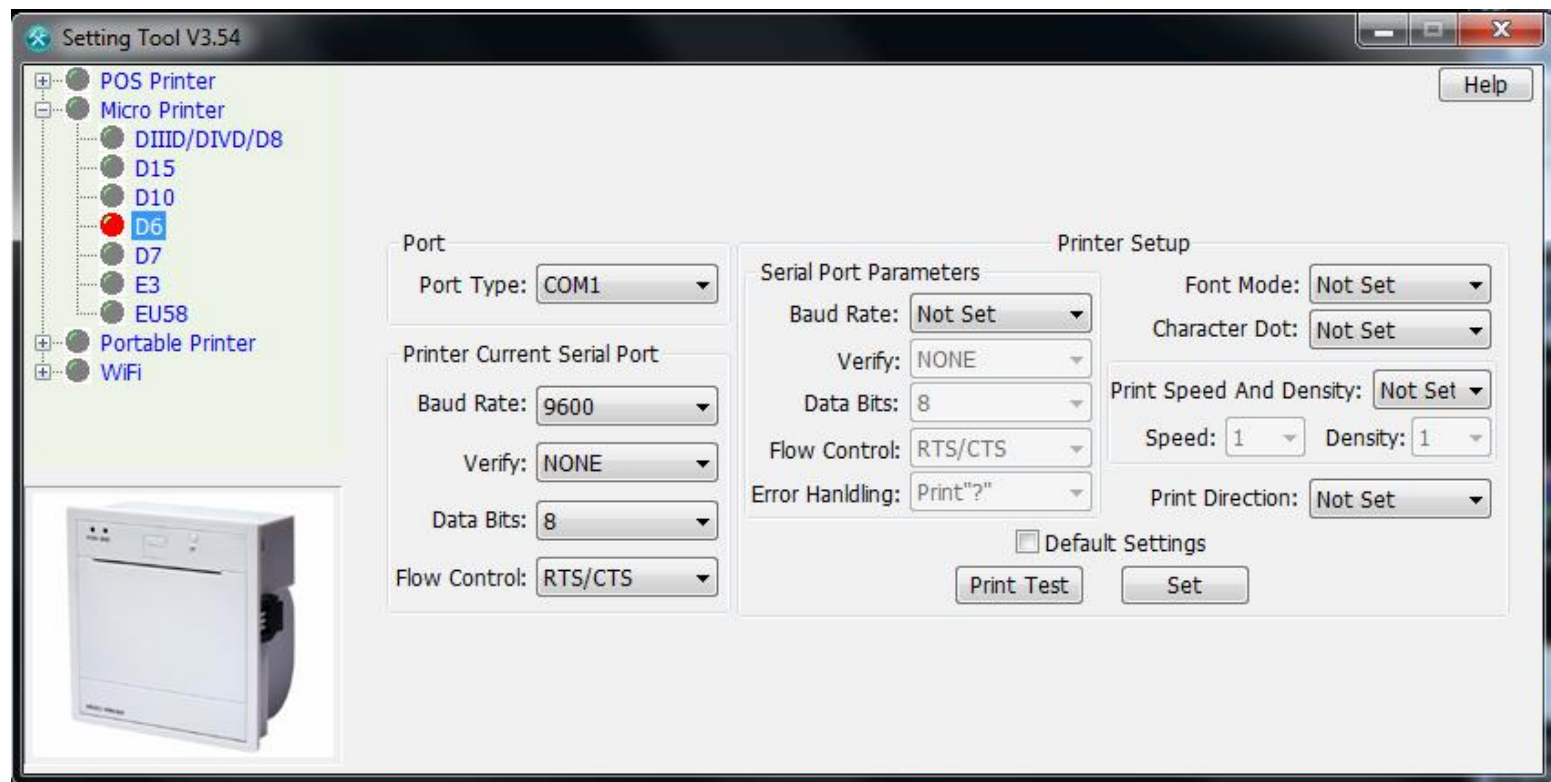
Refer the General parameters.

D10 Parameters



Refer the General parameters.

D6 Parameters



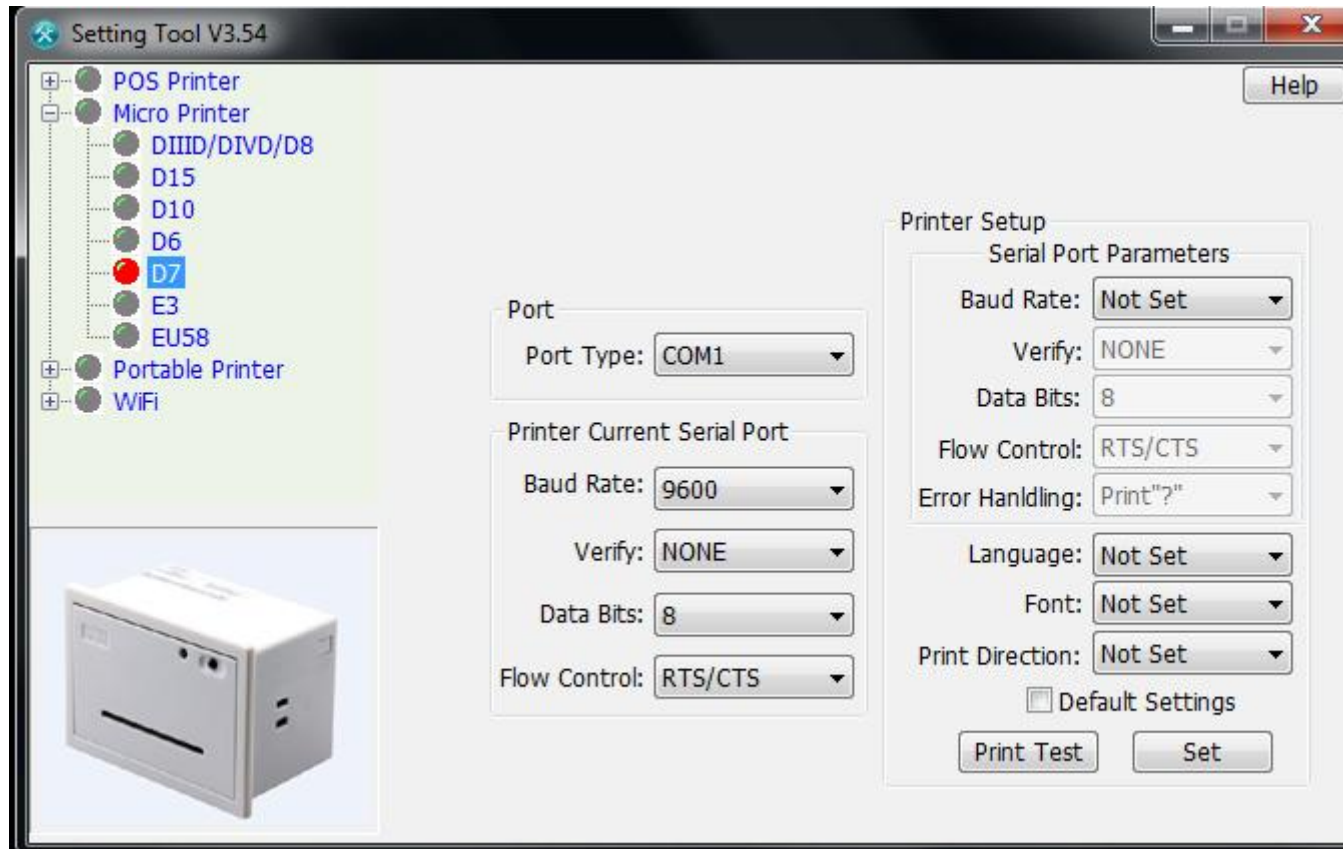
Special Parameters

Font Mode: Character / Chinese Character

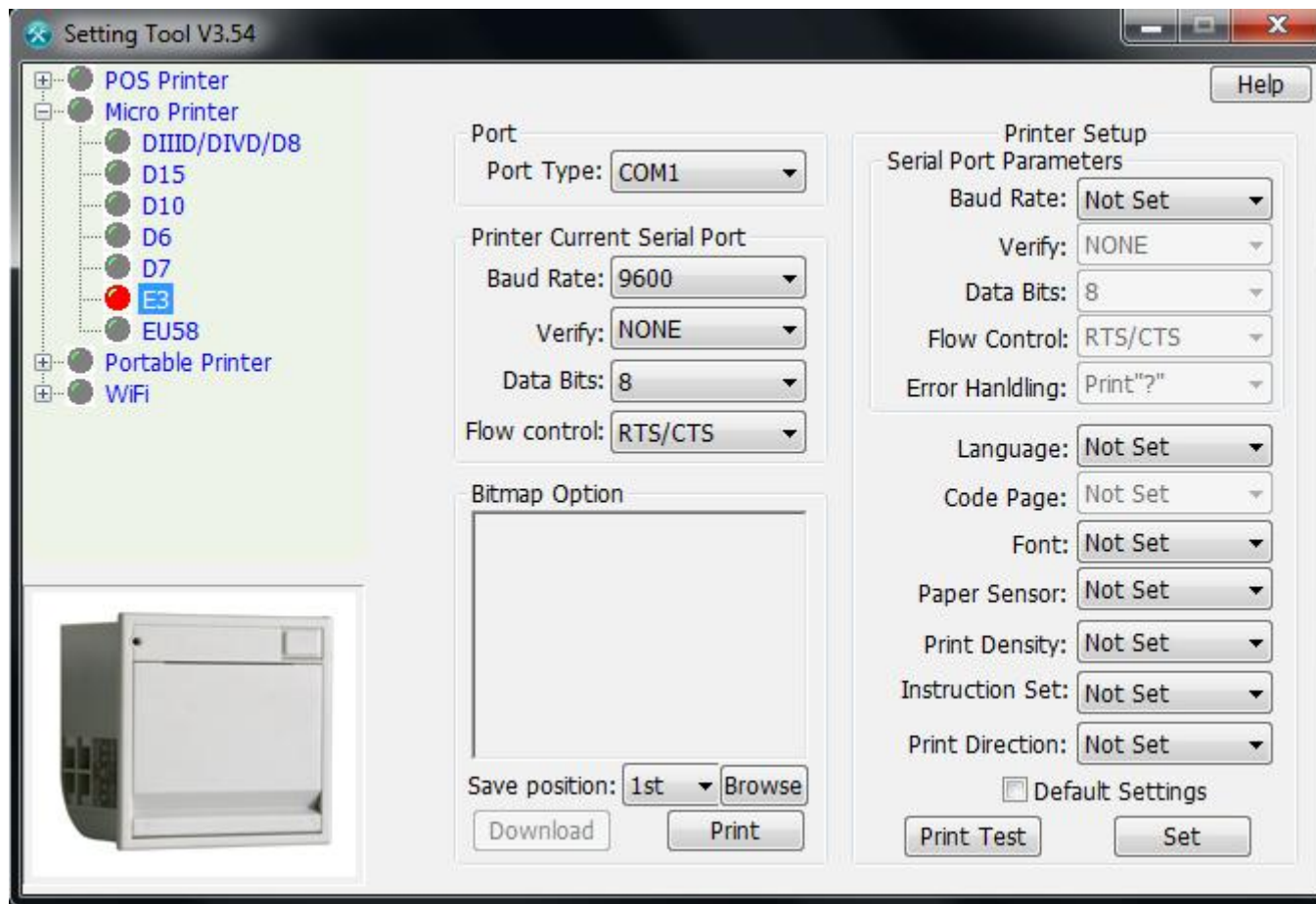
Character Dot: 12*24 / 9*24 / 16*17

Print Speed And Density: Set the printing speed and density.

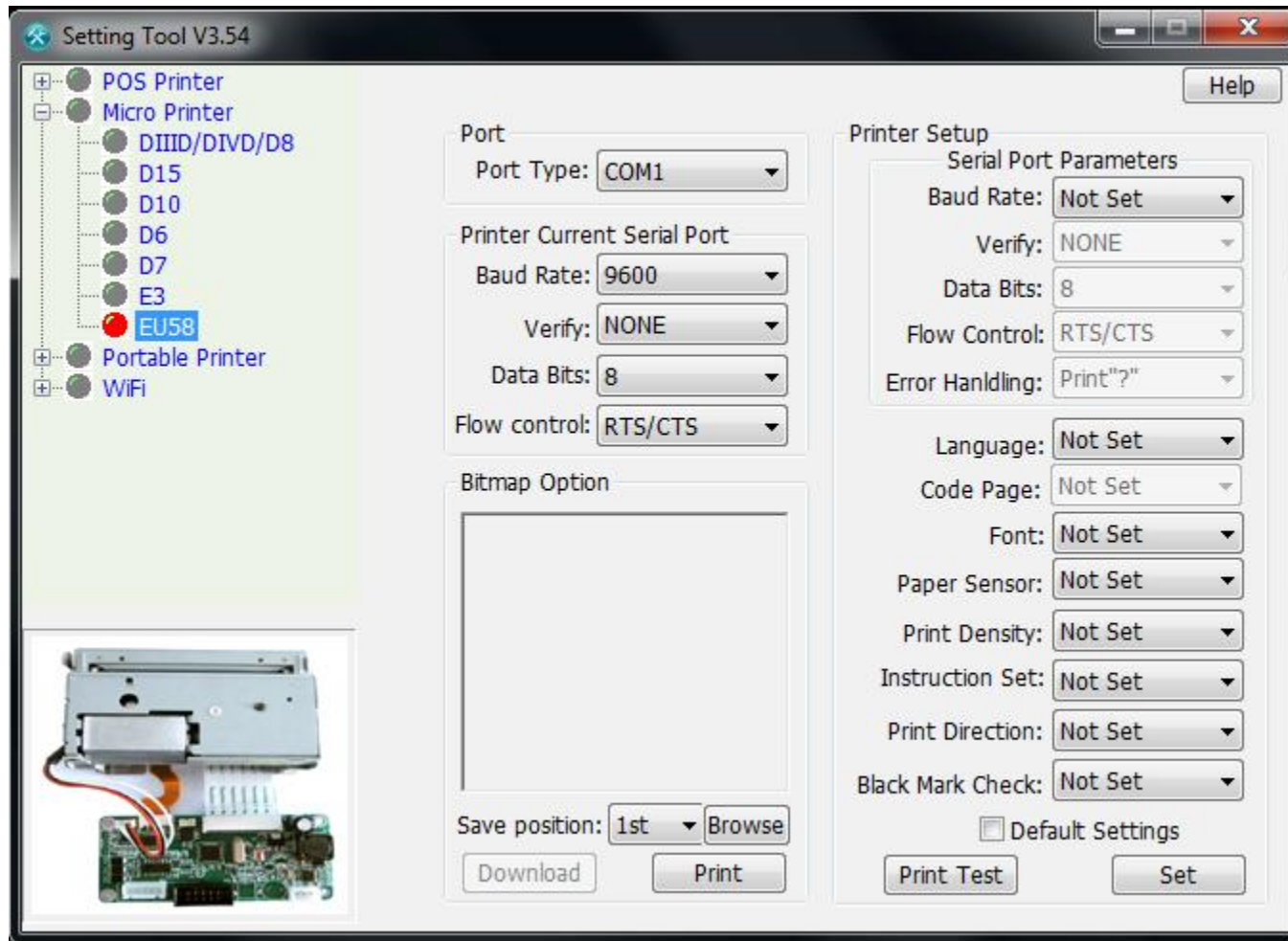
D7 Parameters



E3 Parameters



EU58 Parameters



The General Parameters of Portable Printer Port----

Port Type: Select the connection port, it supports
COM
USB

Printer Current serial Port----

Baud Rate: 1200 to 115200

Verify: NONE/ODD/EVEN

Data Bits: 7/8

Flow Control: NONE or RTS/CTS or XON/XOFF

Bitmap Option-

Save position: select a number of store position.

Serial Port Parameters----

Baud Rate: 1200 to 115200

Verify: NONE/ODD/EVEN

Data Bits: 7/8

Flow Control: NONE or RTS/CTS or XON/XOFF

Error Handling: Printer “?” / Ignore

Language: English / Simplified Chinese / Traditional Chinese

Font: select the character size

Paper Sensor: Low / Medium / High

Print Density: Low / Medium / High

Instruction Set: ESC/POS or SPMP or Others

Code Page: If Language set to English, Code Page supports 47 Languages.

Black Mark Check: OFF / ON

Manufacturer: Change the Manufacturer

Printer Type: Change the Printer Type

Factory Date: Change the Factory Date

Enable Bluetooth Password: Turn on or off Bluetooth Password

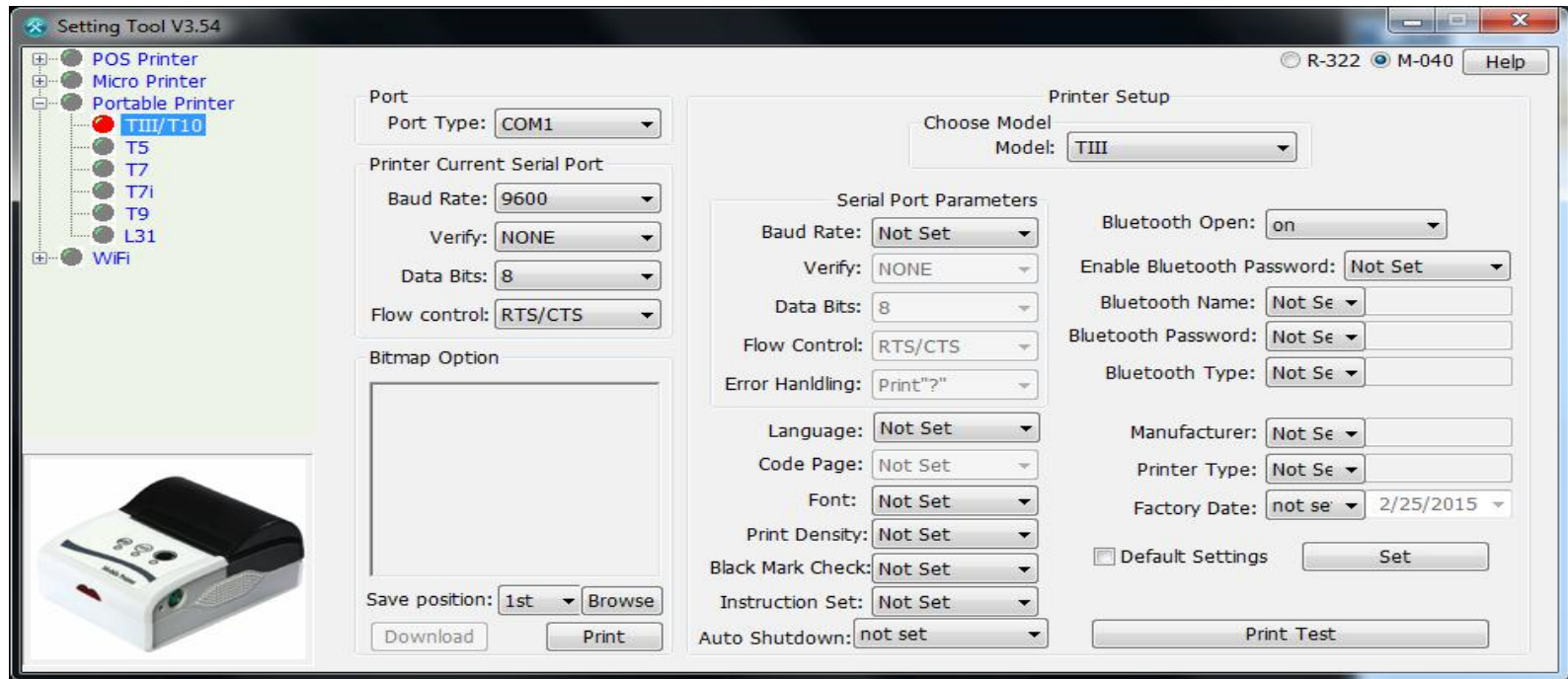
Bluetooth Name: Change the Bluetooth Name

Bluetooth Password: Change the Bluetooth Password

Bluetooth Type: Change the Type of Bluetooth

Black Mark Check: OFF / ON

TIII/T10 Parameters

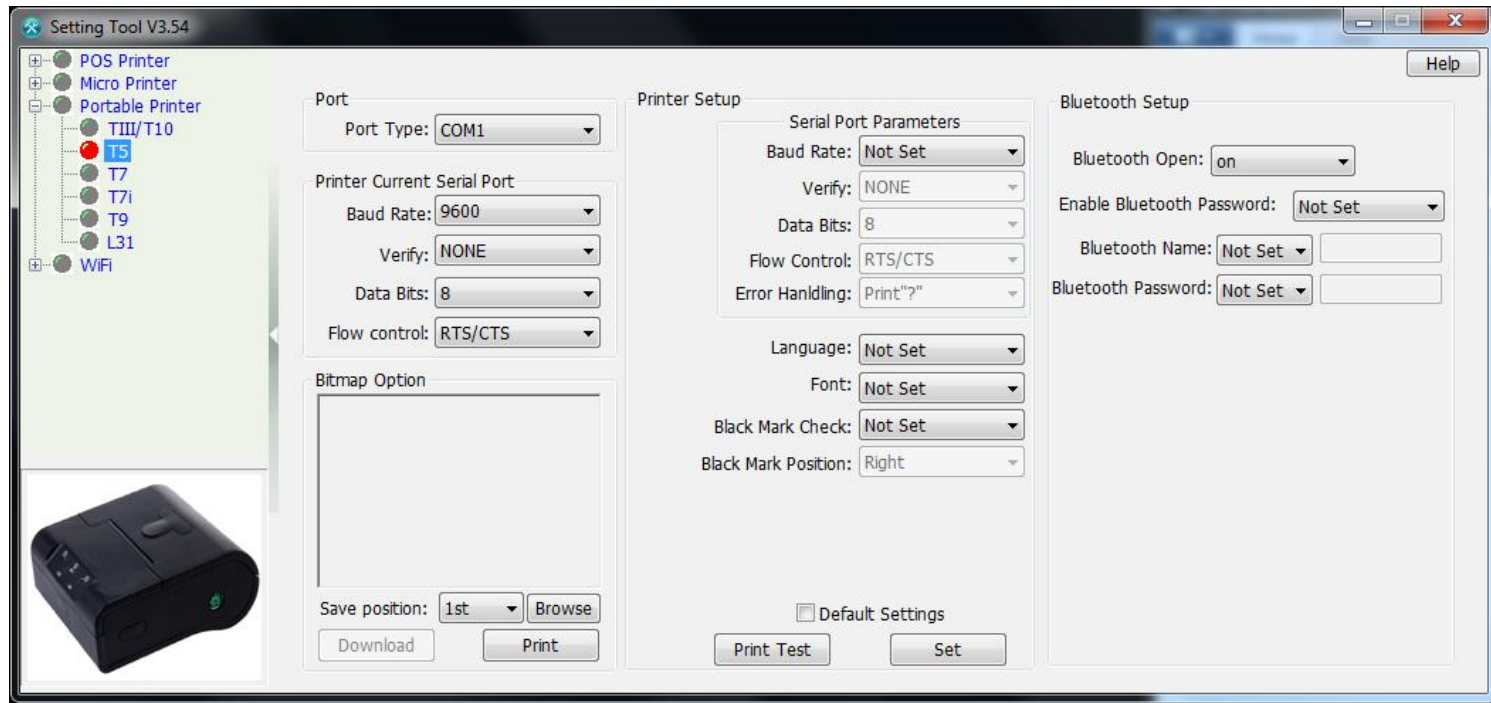


Special Parameters

Choose Model: TIII / T10

*NOTE: on the right top, there are two items “R-322” & “M-040”, these are firmware version of the printer. The Model and firmware version must be selected before setup.

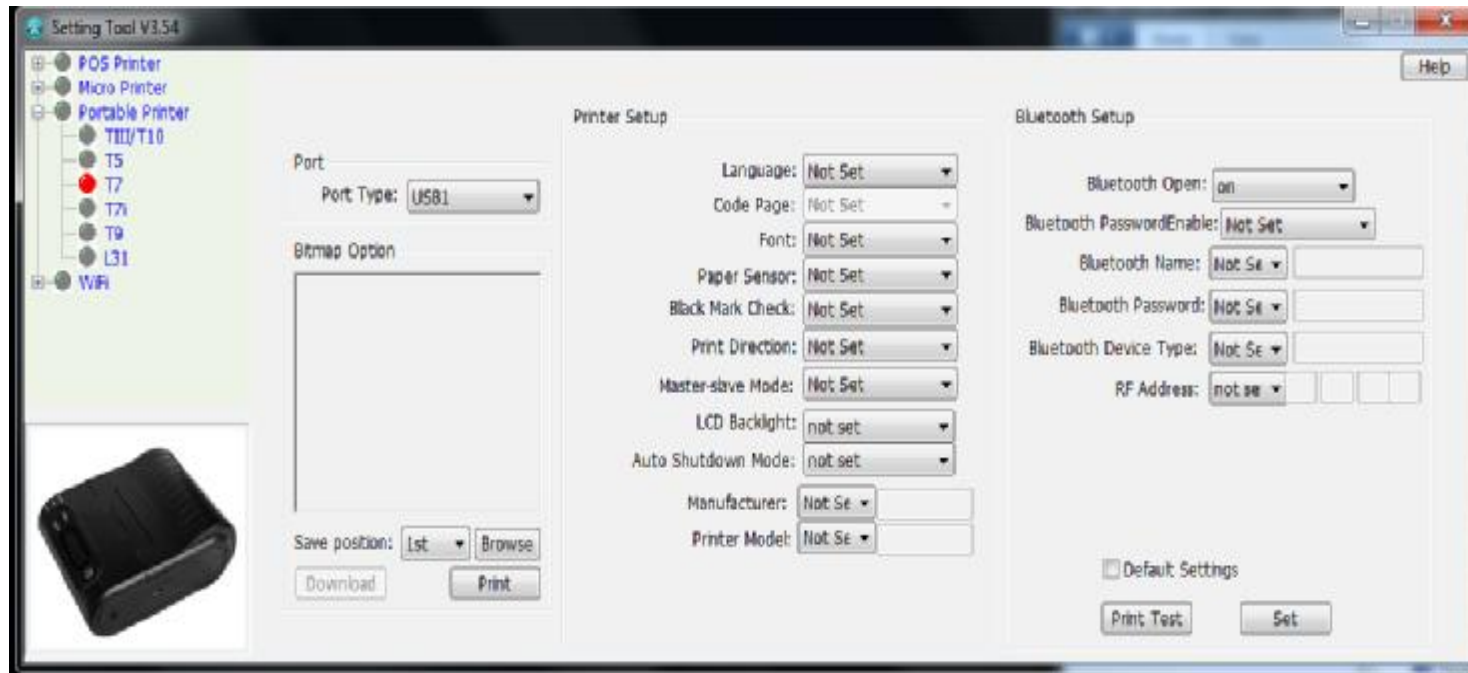
T5 Parameters



Special Parameters

Black Mark Position: Right / Left

T7 Parameters



Special Parameters

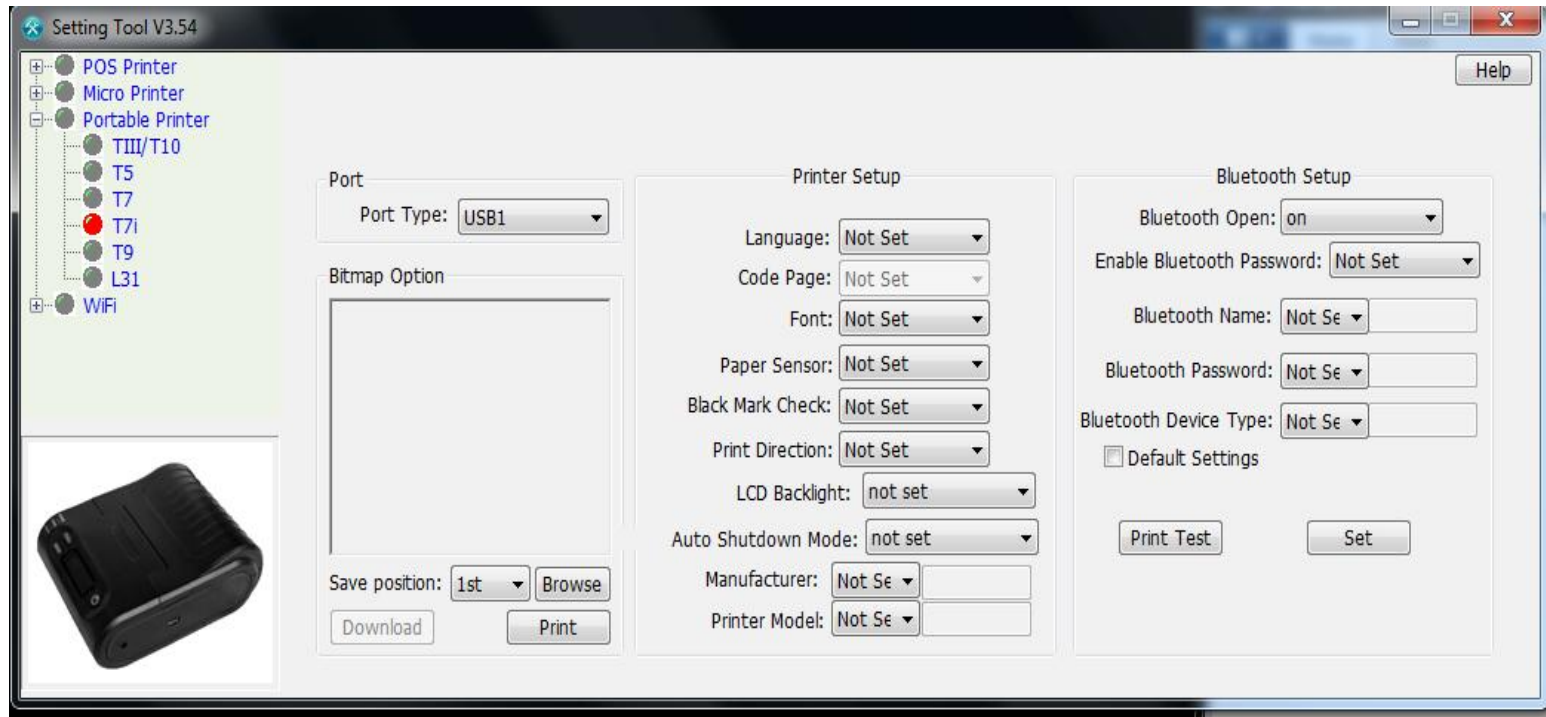
Master-Slave Mode: Slave Mode / Master Mode

LCD Backlight: Open Backlight / Close Backlight

Auto Shutdown Mode: Never / 10 minutes / 20 minutes / 30 minutes

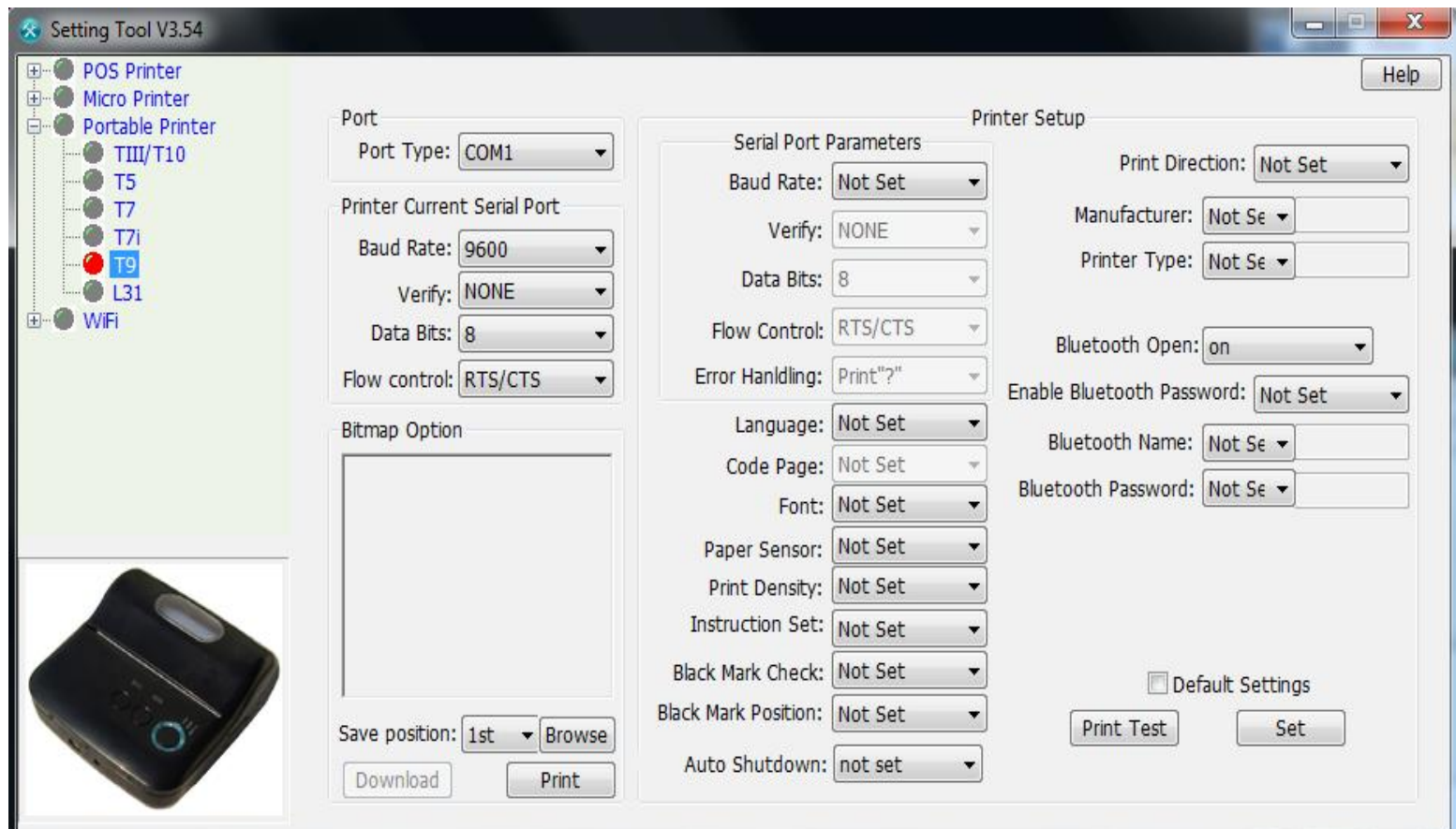
RF Address: Set a RF address

T7i Parameters



No Special Parameters

T9 Parameters



No Special Parameters

